



balt adapt

Baltic Sea Region Climate Change Adaptation Strategy

Add your individual subtitle



Individualize by clicking View > Header and Footer

www.baltadapt.eu



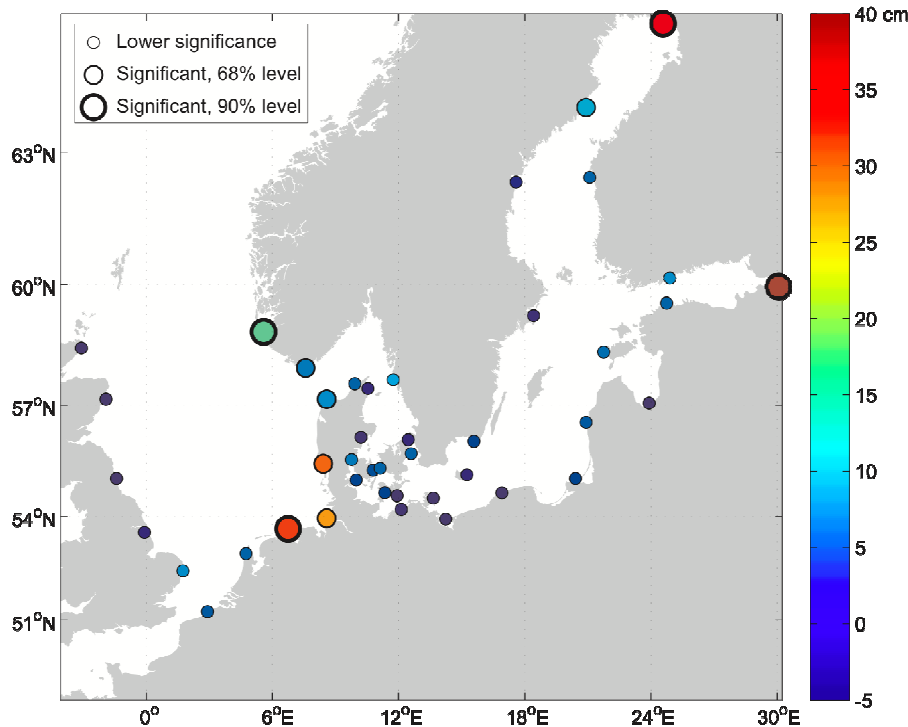


The Baltic Sea and its coastlines face challenges due to climate change...

- Changes in precipitation amounts and patterns
- Increase in terrestrial and sea temperatures
- Rise in sea level
- Decrease in ice cover
- Intensified eutrophication and algal blooms, increased runoff and pollution

...it is time to adapt now!

Background: sea level change



Wind-induced contribution to future sea level: predicted 10 years extreme for year 2100 minus present values.

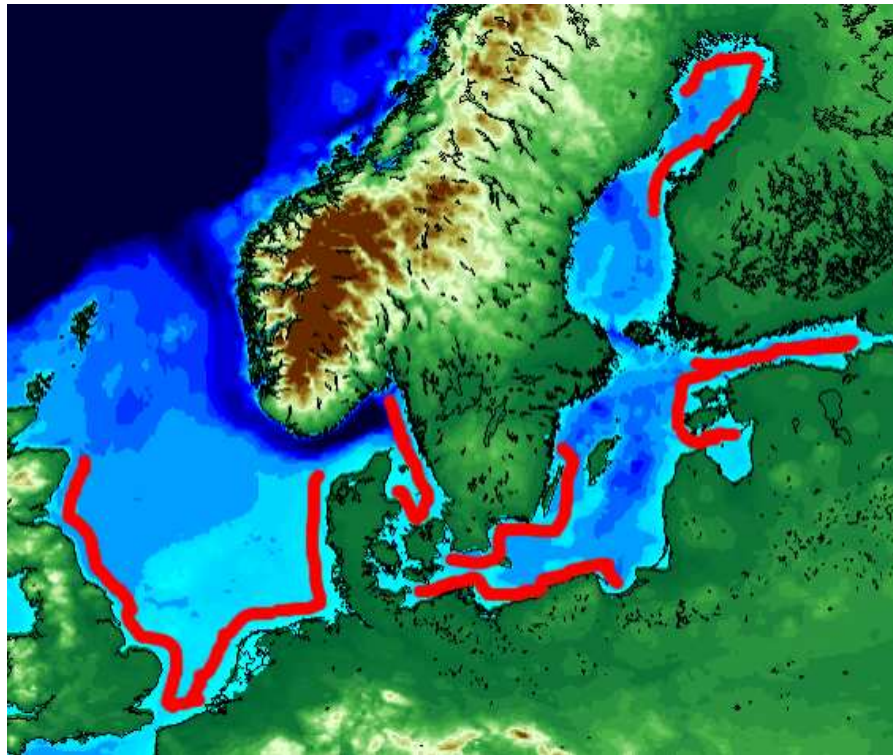
Sea level rise is affected by:

- Global sea level rise
- Land up lift
- Changes in strength and direction of local winds

Wind-induced sea level rise is expected to be up to 20-40 cm in parts of the Baltic Sea (inner Gulf of Finland, Bothnian Bay).

Madsen, K. S.: *Recent and future climatic changes in temperature, salinity, and sea level of the North Sea and the Baltic Sea.* PhD thesis, University of Copenhagen, pp. 1–149.

Background: storm surges



Present day storm surge hazard area map

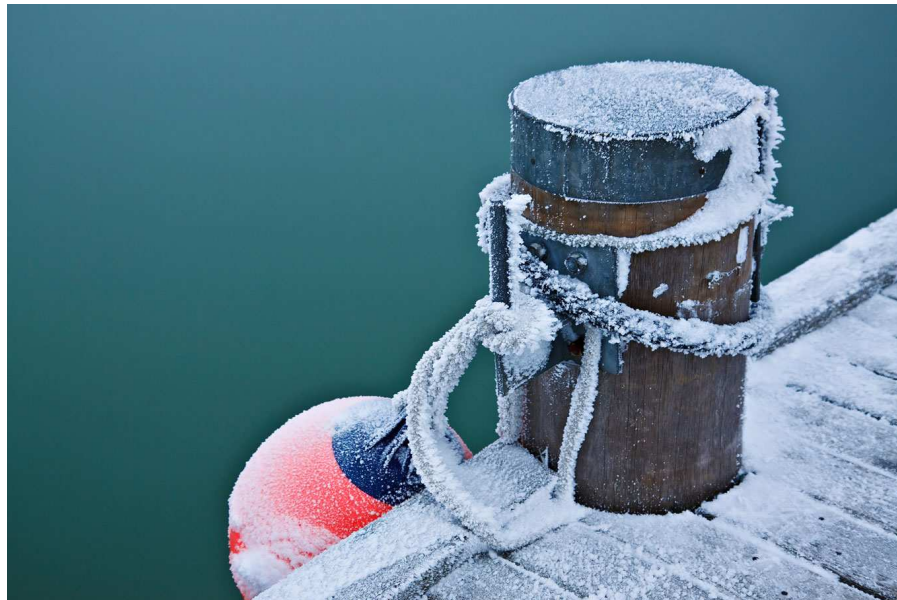
Schmidt-Thomé, P., et al. (2006): *The spatial effects and management of natural and technological hazards in Europe -ESPON 1.3.1* (ESPON report No. 1.3.1). Geological Survey of Finland (GTK).

The coast lines of the Baltic Sea are strongly affected by storm surges.

Future changes of storm surges will be affected by:

- Changes in global sea levels
- Regional and local sea level changes due to land uplift
- Changes in strength and direction of local winds

Background: adaptation



Baltadapt can't stop climate change – but it will help to adapt to its impacts.



**Baltadapt's objective is to develop
a Baltic Sea Region wide
climate change adaptation strategy.**

Baltadapt activities (1/2)

- **Identify and review current knowledge** on climate change with special focus on
 - Regional climate information,
 - The Baltic Sea ecosystem,
 - The coastal zone.
- **Develop an information portal** providing structured access to all available information on climate change adaptation in the Baltic Sea Region
- **Develop a Baltic Sea Region climate change adaptation strategy** in close consultation with local and regional stakeholders and a policy forum for climate change adaptation

Baltadapt activities (2/2)

- **Identify necessary actions** to be included in an action plan for implementing the strategy
- **Identify suitable funding mechanisms** for financing the actions laid out in the action plan
- **Contribute to EU policy papers** and the programming process of national and transnational programmes



Providing an evidence base



- A robust **evidence base** on the impacts and consequences of climate change in the Baltic Sea Region
- A **Baltic Sea Region wide climate change adaptation strategy**, as called for in the EU Strategy for the Baltic Sea Region
- An **action plan** providing specific steps towards achieving the objectives laid out in the strategy

- **Policy benchmarks** for Baltic Sea Region countries relating to the development of national climate change adaptation plans and their integration into various policy areas
- Development and adaptation of innovative **financing mechanisms**
- **Baltic Window**, a one-stop-shop information portal compiling all available information on climate change adaptation in the Baltic Sea Region

 **Lead Partner: Danish
Meteorological Institute**

 National Environmental Research
Institute, Aarhus University (NERI)

 Federal Ministry for the
Environment, Nature Conservation
and Nuclear Safety (BMU)


 Federal Environment Agency

 Leibniz Institute for Baltic Sea
Research Warnemünde (IOW)

 University of Latvia

 Baltic Environmental Forum (BEF)
Lithuania

 Finnish Environment Institute –
SYKE

 Swedish Meteorological and
Hydrological Institute (SMHI)

 University of Tartu, Estonian
Marine Institute

 The Secretariat of the Council of
the Baltic Sea States (CBSS)



balt adapt

Project passport

Baltic Sea Region Climate Change Adaptation Strategy

Project duration:

October 2010–December 2013

Project budget:

ERDF Co-Finance: € 2,12 m

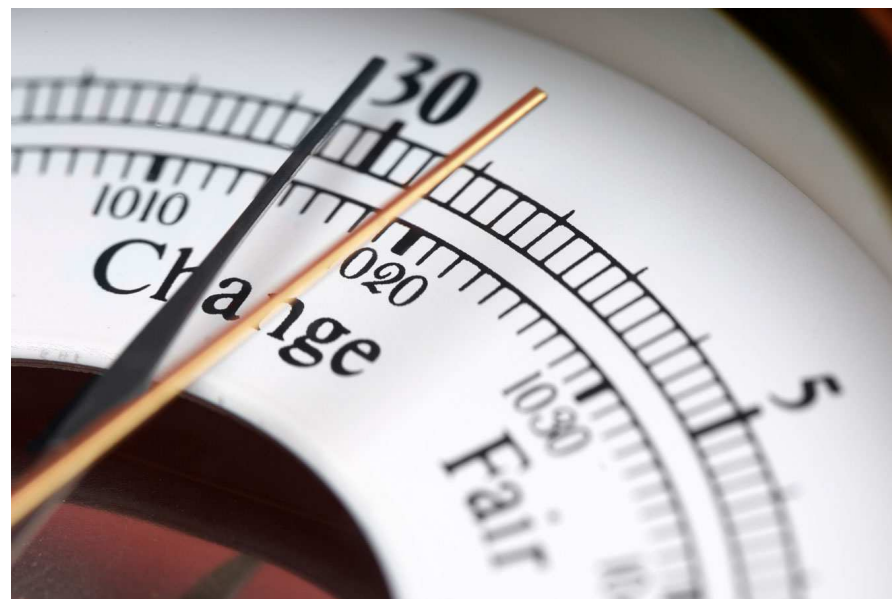
Partners' contribution: € 0,74 m

Total Budget: € 2,86 m

Funding programme:

Baltic Sea Region Programme 2007–2013

Baltadapt is a fully fledged **Baltic21 Lighthouse Project**.



Individualize by clicking View > Header and Footer

www.baltadapt.eu



Baltic Sea Region
Programme 2007–2013

Part-financed by the European Union
(European Regional Development Fund)



Contacts

Lead Partner

Danish Meteorological Institute

Contact: Ole Krarup Leth

okl@dmi.dk

+45. 3915 7223

Project Coordination Office

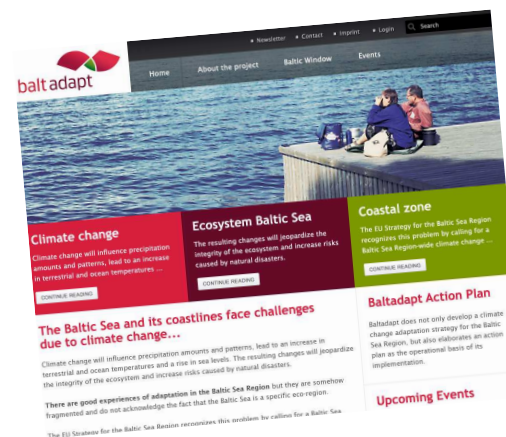
s.Pro sustainable projects

Contact: Carsten Beyer

cb@sustainable-projects.eu

+49. 30 832 1417 44

www.baltadapt.eu



Individualize by clicking View > Header and Footer

www.baltadapt.eu



Part-financed by the European Union
(European Regional Development Fund)